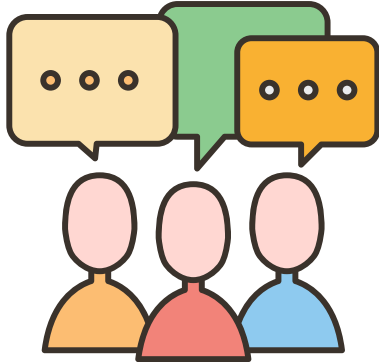


2023 BECOMES 2024



LFES PTA; EVERY CHILD EVERY DAY



Association Meeting Reminder

When? Thurs, 1/18, 7pm
Where? LF K8 Library
WHAT? Get connected with school leaders and find out about plans for the spring. Meetings run about an hour - an hour and half.

Looking Ahead

- 1/15 MLK, Jr Day - No School
- 1/18 PTA Association Meeting
- 1/22-1/26 The Great Kindness Challenge (See info from Mrs. Gavrila)
- 1/26 End Glow Party Dinner Preorders
- 2/2 GLOW PARTY
- 2/5 Kindness Week Spirit Day
- 2/5-2/9 Kindness Week (See info from Mrs. Gavrila) & Meet the Masters (Suerat)
- 2/9 PAL Sponsored Jersey Day
- 2/16 - 2/19 President's Day - No School
- 2/20 - 2/23 Conference Min Days
- 2/23 - 3/3 Read a Thon
- 3/2-3/6 Read Across America Week

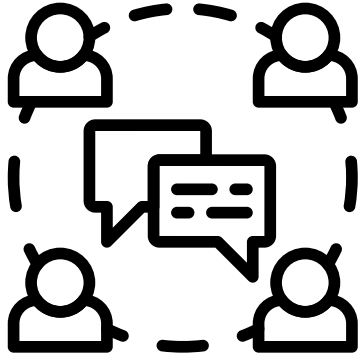
Come Dance With Us

When? Friday 2/2 5:30 - 8:30
Where? LF K8 Covered Courts
WHAT? Wear your warm neon or white and dance the night way. Coffee and hot chocolate provided.

In and Out available for pre-purchase until 1/26.

Scan Here





Groups Around Campus

Our CUBS are SO lucky to have many groups around campus working to support them, but as parents it can be hard to know how all of those groups work together.

Here is a cheat sheet to help you keep track:

LFES PTA: The local community chapter of a nation wide advocacy group that works with school leaders to directly support our Cubs and teachers. **You can find our info in Friday Folders, www.lfespta.com and @lfespta on Instagram and Las Flores Elementary PTA on FB.**

LFMS PTSA: The middle school PTSA chapter. LFES PTA and LFMS PTSA will merge to serve all LF K8 students beginning with the 2024 school year.

PAL (Peer Assistance & Leadership): LFK8 has both elementary and middle student groups run by teachers. They sponsor spirit days and volunteer in leadership roles on campus.

LFK8 Counseling: Mrs. Gavrila and her department work with students to build their socio emotional health.

ASB: Is a middle school student leadership group that sponsors lunch time activities, dances, etc. Their major fundraiser, Step It Up, is held with the middle school in the Fall.



Read a Thon '24

In the 2023/2024 school year LFES PTA will spend approximately \$143 student to bring valuable programs and supplies to our Cubs and teachers. We are very proud that over 83% of our \$50,000 budget is slated for programs with a direct classroom impact. This includes agendas and folders, art lessons and materials with Meet the Masters, STEAM materials and tech, field trips and experiences, teacher selected materials through teacher reimbursements and funding the PBIS Cub Store to support our school wide positive behavior system. Beyond the classroom, LFES PTA is working to build community through all school events and assemblies, as well as enhancing recess activities with new equipment including shade.

Our goal is to raise between \$30,000 - \$35,000 or about \$100 per student. With your help we know we can shatter our goal!!!

Please note: CUSD and LFK8 will participate in the Heart Challenge this spring. This is a volunteer outreach initiative. All proceeds benefit the AHA. This is NOT a LFES PTA fundraiser or program.